

Prerequisites for Access to R/3 and ERP Systems by SilverMine

Last updated: May 7, 2007

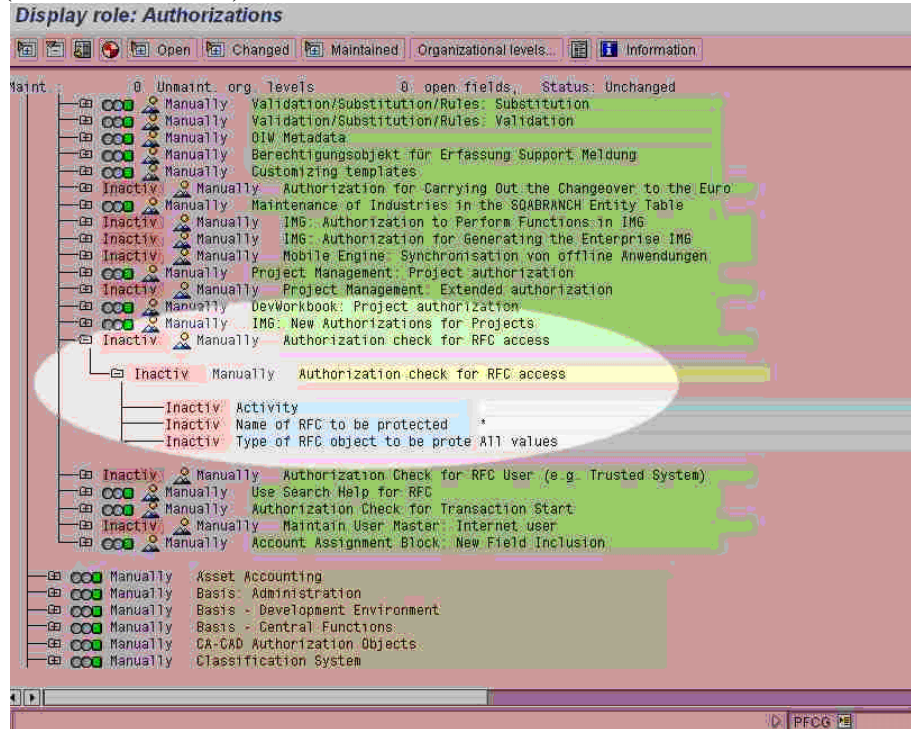
SilverMine uses SAP's Java Connector to connect to your R/3 or ERP system. We do not require a login (interactive) user.

A. SAP users, authorizations, systems

1. Please ask your SAP basis team to set up a non-dialog login to your R/3 or ERP system that has:

- a) Appropriate authorizations for normal RFC calls
- b) Special authorizations for repository / metadata access. The SAP Java Connector documentation details the required authorizations as follows:
"Grant access rights via Authorization Object: S_RFC, ACTVT: 16, FUGR"

The authorization can be maintained or verified in transaction SU01 or PFCG (role maintenance).



2. remote access to a machine that can access the SAP R/3 or ERP system that contains the product models

B. SilverMine Host Machine: Please follow the installation instructions in the SilverMine Wizard. The SilverMine host machine does require a network connection to the server that runs SAP R/3 or ERP.